


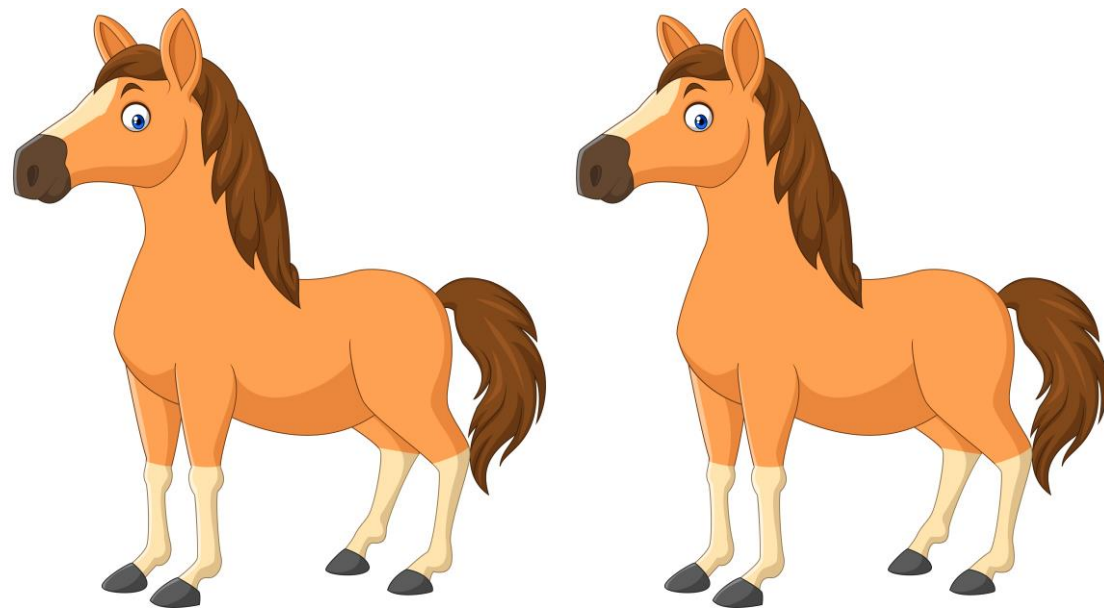
d of t woorde

Om uit te vind of 'n woord op 'n **d** of 'n **t** ending, dink  wat die meervoud van die woord is.

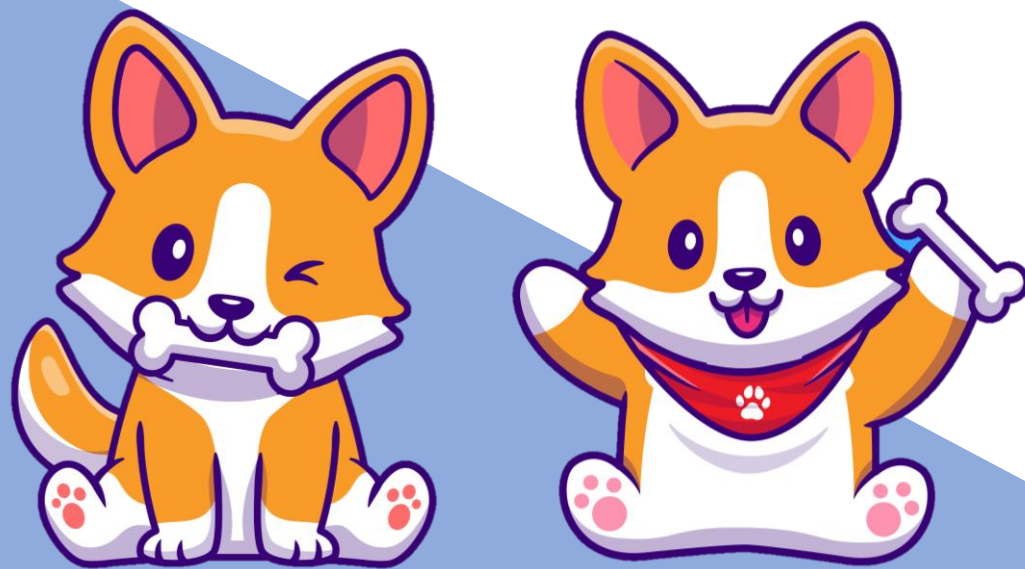
As jy 'n **d** in die meervoud hoor, eindig die woord op 'n **d**. Hoor jy 'n **t** in die meervoud, eindig die woorde op 'n **t**

Kom ons kyk na woorde wat  
eindig met 'n d

per**d** = per**d**e



hond**d** = hond**d**e



rand**d** = rand**d**e

hand = hande

tand = tande

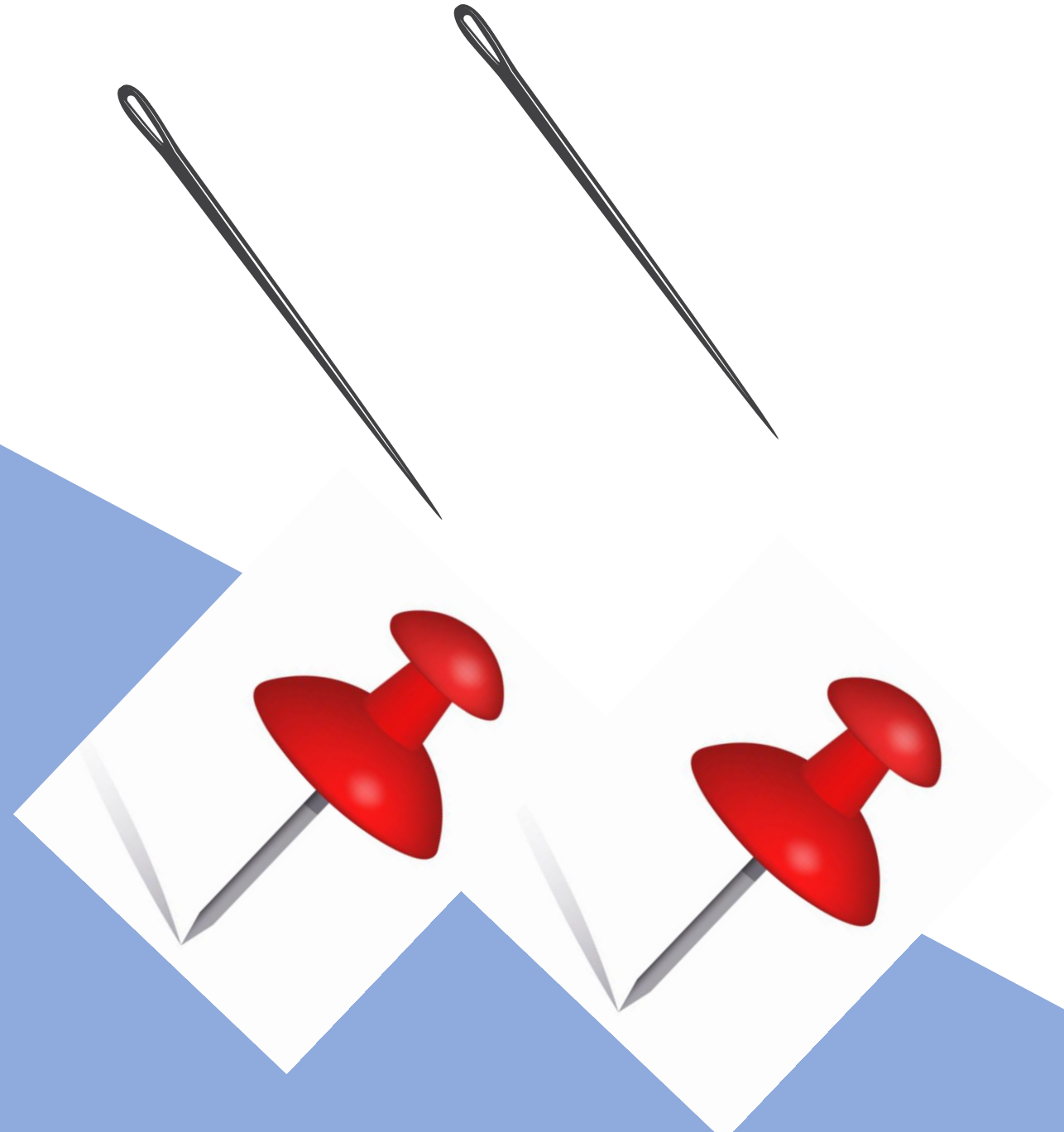
strand = strande



naald = naalde

speld = spelde

beeld = beelde



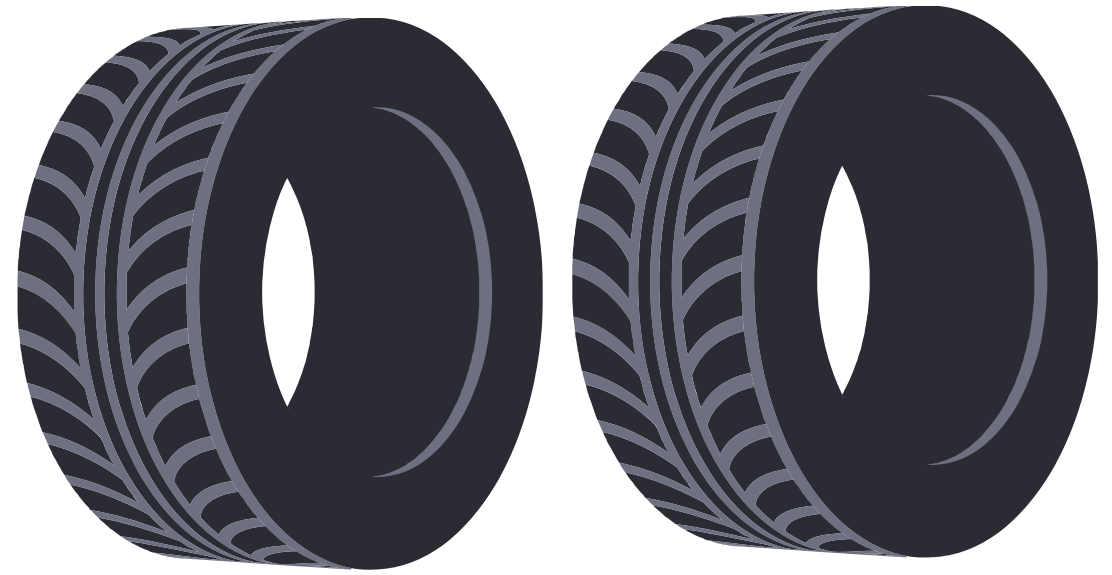
monde = monde



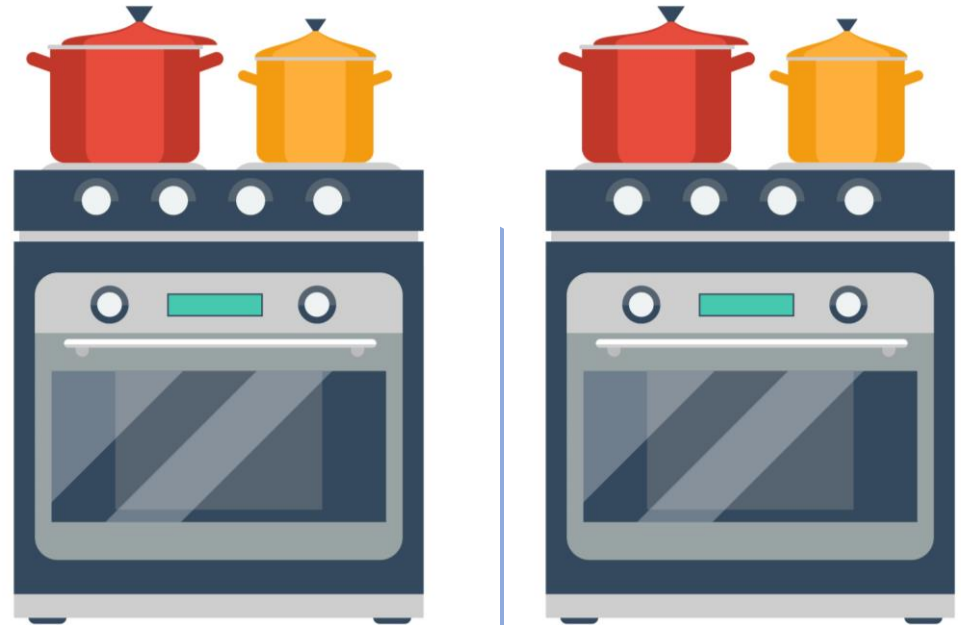
held = helde



band = bande



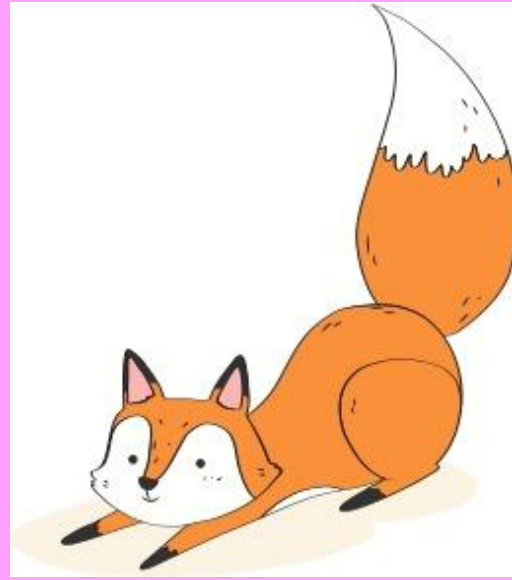
oond = oonde





Kom ons kyk na woorde wat  
eindig met 'n t

start = starte



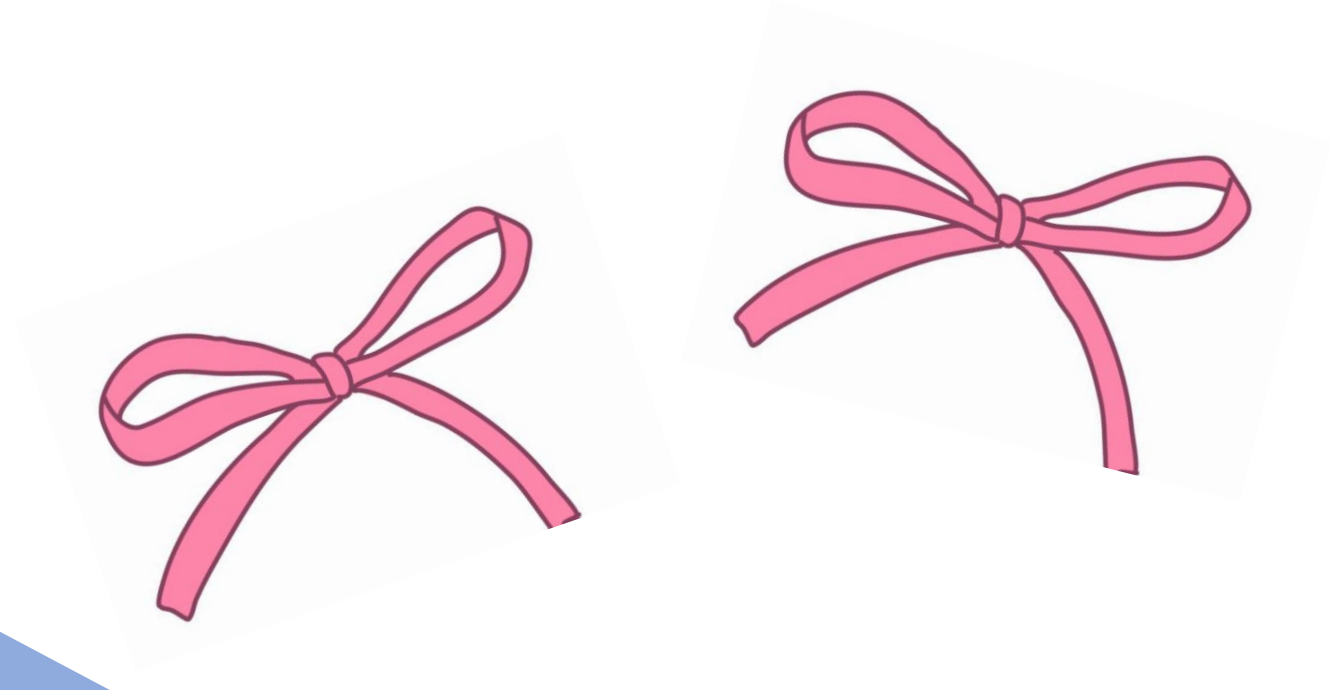
kant = kante

$\frac{40}{40}$

$\frac{25}{40}$

punt = punte

lint = linte



tert = terte



fout = foute

pet = pette

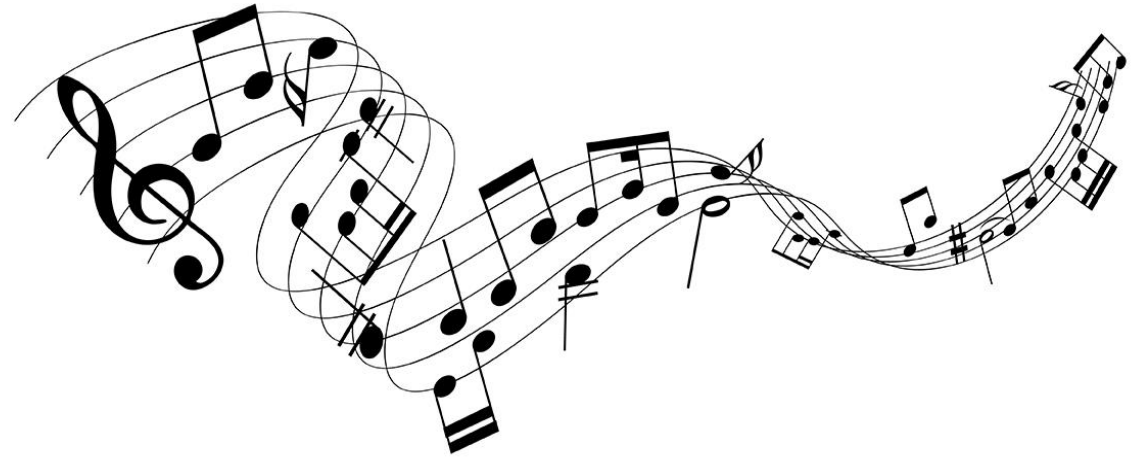


net = nette



vrat = vrate

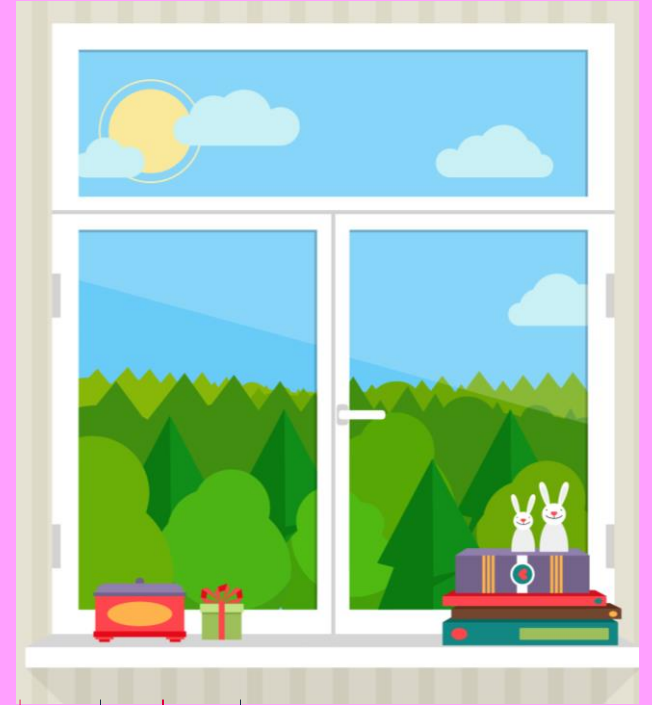
noot = note



geut = geute



ruit = ruite



hart = harte

