

# Plants and food





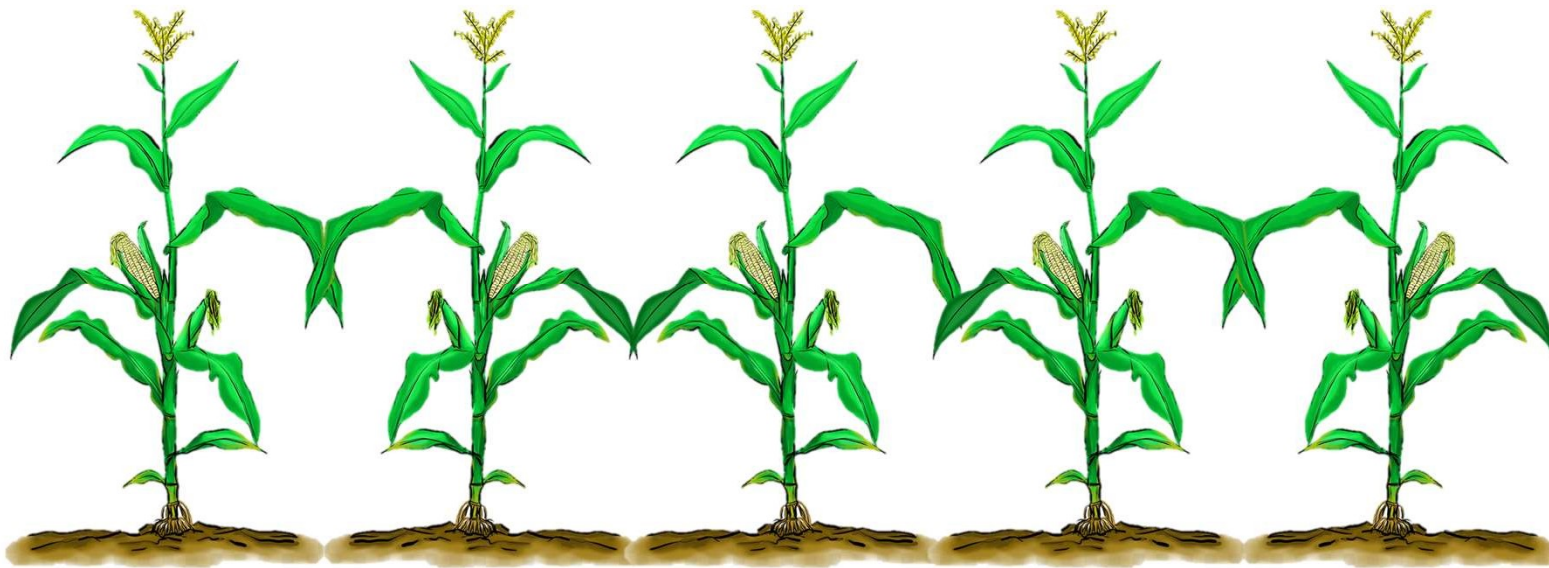
Hello friends. My name is Farmer Freddie.

Today I am going to share some interesting facts with you about **PLANTS AND FOOD**. Read carefully, because I am going to ask you a few questions when we are done.





Maize grows in South Africa. Our name  
for maize is **mealies**.



# How does a mealie grow?



The farmer plants the seeds in a row.

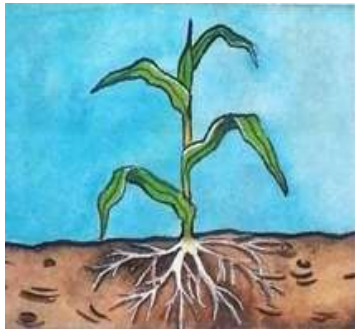


The rain helps the seeds to grow.





# How does a mealie grow?



The roots feed the plants from the soil.



In ten weeks, the plants grow to two metres tall.

2 metres = the height of your classroom door!

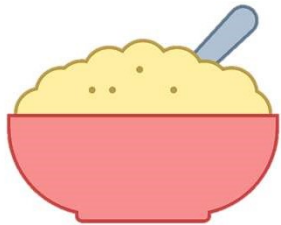




# What do we use maize for?



People eat mealies.

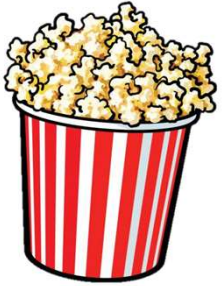


People eat porridge.





# What do we use maize for?



Children eat popcorn.



Animals eat maize.

**Some People use maize Balls to Catch fish!**



# LET'S MAKE A CHART!



The roots feed the plants from the soil.



The farmer plants the seeds in a row.



In ten weeks, the plants grow to two metres tall.



The rain helps the seeds to grow.



Oh, dear! My picture and caption order is completely wrong!  
Can you help me, please? Draw the pictures and write the captions in your workbook in the correct order.



# LET'S MAKE A CHART!



The farmer plants the seeds in a row.



The rain helps the seeds to grow.



The roots feed the plants from the soil.



In ten weeks, the plants grow to two metres tall.

You are a star! What would I have done without you?





Friends, I've told you all I know about maize.  
Now I have a few questions for you:

(Remember to write down your answers in full sentences!)





1. What does a mealie plant grow from?

-----

2. What helps the mealie plant grow?

-----

3. Where does the plant's food come from?

-----





4. How tall does the mealie plant grow?

-----

5. Name three things that a mealie plant gives us to eat.

-----

6. Bonus question: What did Farmer Freddie compare the height of the mealie plant to?

-----





TAKE OUT A COLOUR PENCIL AND LET'S GO  
MARK THOSE ANSWERS!







1. What does a mealie plant grow from?

A mealie plant grows from a seed.

2. What helps the mealie plant grow?

The rain/water helps the seed grow.

3. Where does the plant's food come from?

The plant's food comes from the soil.





4. How tall does the mealie plant grow?

A mealie plant grows to two metres tall.

5. Name three things that a mealie plant gives us to eat.

Popcorn, porridge, mealies.

6. Bonus question: What did Farmer Freddie compare the height of the mealie plant to?

He compared it to our classroom door.





YOU HELPED ME QUITE A LOT TODAY!  
I HOPE YOU WILL COME VISIT ME AGAIN  
SOON.

