



English Home Language
Week 7: 1-5 June
Theme 8
Animals and us



Grade 5

6

Monday

Remember to read for three minutes and report back at the beginning of every day.

Mark the exercises done in week 6 – see file: Week 6 Memos.

Make sure all work for week 6 has been completed and marked.

No revision needed.

Nouns p.82

Read the notes on abstract and collective nouns.

Do no 1 + 2 in your classwork book.

At no 2 Shoal refers to a mixture of fish that stay in a group for safety in numbers. School refers to fish that act in the same way, like swimming in the same direction.



Tuesday

Abstract nouns

Match the following abstract nouns with the pictures below.

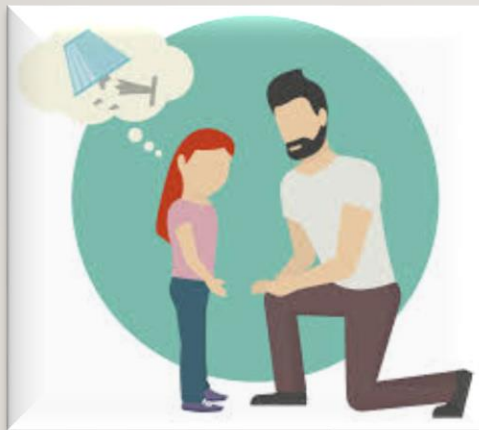
Do not go to the next slide yet, as it contains the answers.

pride / joy / honesty / boredom / bravery

1



2



3



4



5



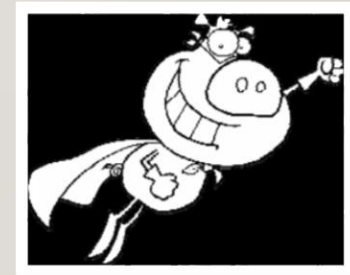
Tuesday

Abstract nouns answers:

pride -3 / joy-5 / honesty-2 / boredom-1 / bravery-4

Worksheet: Abstract nouns

Rewrite the seven sentences in your classwork book, choosing the suitable abstract noun. Underline or write the abstract nouns in colour.



Wednesday



Lone dog p.84

Read the poem twice.

It is a well-known poem about a dog that does not want to be a pet and would rather be independent and live in the wild.

Do no 1 in your classwork book.

Look up the words in a dictionary or use the internet.

Write the word and a short definition next to it. It must refer to the meaning as it is used in the poem.

1a) bay – to howl (do not write the bay at the sea)

Choose 4 of the words and write a sentence each to show the meaning.



Thursday

Lone dog p.85

We'll discuss no 2,3 and 6. Possible answers on next slide.

2. Look at the pictures at the top of p.85.

Which picture best suits the dog in the poem?

Explain your answer.



3. Would you want the dog in the poem as a pet? Explain.

6. Are the rhymes in the poem alternate (abab) or couplets (aabb)?



Thursday

Lone dog p.85

2. Picture 5. The dog is in the wild, howling at the moon.
It is on its own.
3. Your own answer with reason. For example: No
The dog is too wild and would not make a good companion.
6. Couplet rhyming – “lone” + “own” / “sheep” + “sleep”

Now do no 4, 5 + 7 in your classwork book.

At no 4 *happy* you can change to *happiness*

Also do Present continuous tense p.85 no 1-3

(is/are + ing)



Friday

Spelling Group 6

First study the antonyms, synonyms and homophones

The answers are on the next slide.

Study spelling

Get someone to ask you 20 words.

Ask one or two of the antonyms, synonyms and homophones together with group 6 words to total 20. Write out the incorrect words x5. If you have full marks, you may get a sweet, a real one at home or this one.



Friday

Spelling Group 6

Antonyms

mended – tore

tame – wild

frown – smile

weak - strong

speak – listen

city – country (areas)

Synonyms

sleepy - tired

cost – price

share – divide

grin – smile

total – amount

fox – wolf

Homophones

1. tide

2. flour

3. hole

4. flower

5. tied

Weekend

