

English FAL

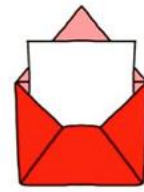
Homophone Crossword Answers



eight



ate



mail



male

A crossword puzzle grid with 13 words filled in. The words are:

- 1. THEIR
- 2. ROAD
- 3. T
- 4. M
- 5. WEAK
- 6. PALE
- 7. BREAK
- 8. SALE
- 9. M
- 10. R
- 11. HEAR
- 12. T
- 13. WRITE

The grid is composed of white squares with black borders. The words are placed in the following positions:

- 1. THEIR: Row 1, Columns 1-5
- 2. ROAD: Row 1, Column 5; Row 2, Columns 5-6; Row 3, Column 6
- 3. T: Row 2, Column 7
- 4. M: Row 3, Column 3
- 5. WEAK: Row 3, Columns 7-10
- 6. PALE: Row 4, Columns 2-5
- 7. BREAK: Row 4, Column 7; Row 5, Columns 7-11
- 8. SALE: Row 5, Columns 1-4
- 9. M: Row 6, Column 4
- 10. R: Row 6, Column 2
- 11. HEAR: Row 6, Columns 3-7
- 12. T: Row 7, Column 1
- 13. WRITE: Row 7, Columns 2-6

